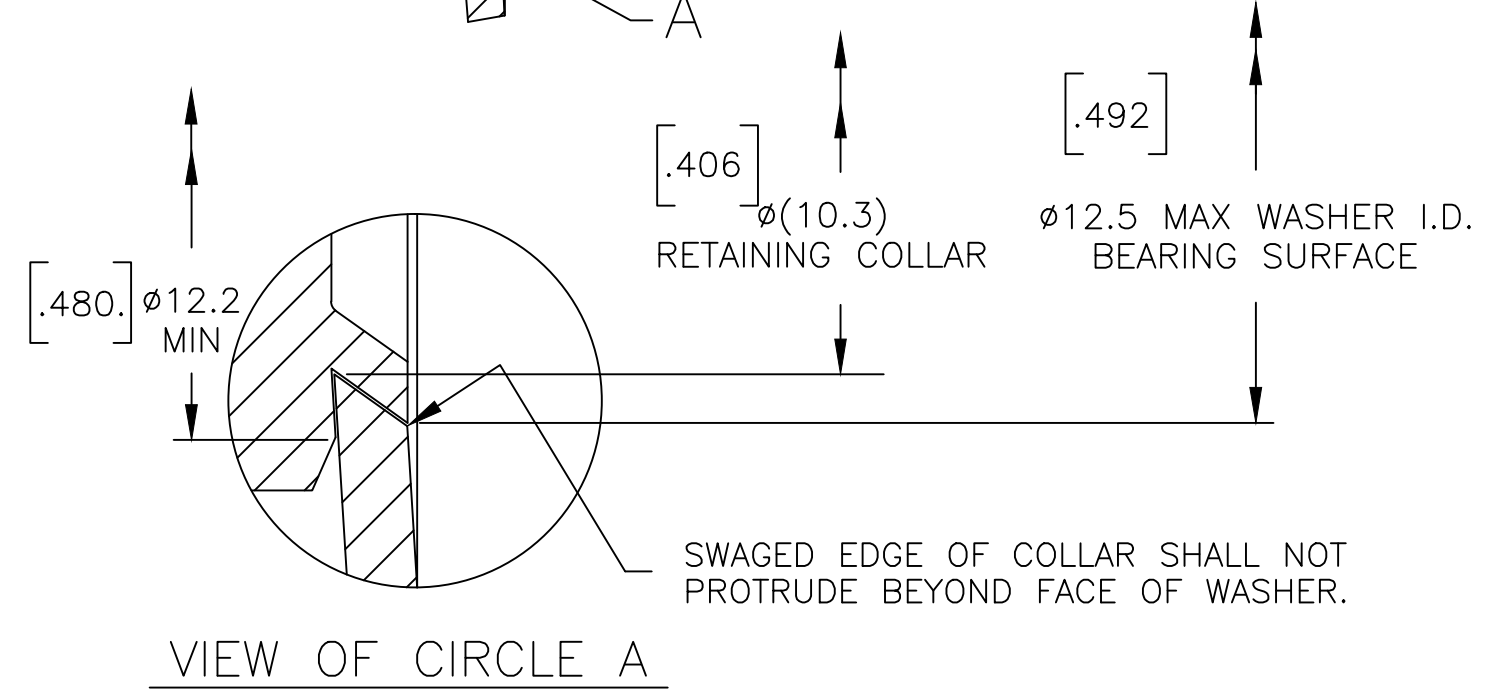


ACROSS FLATS AND CORNERS MUST BE AT OR ABOVE MIN LIMIT OVER THIS DISTANCE EXCLUSIVE OF DEPRESSED PORTION.

NOTE: DIMENSIONS IN [] ARE IN INCHES.

NOTES:

1. A LACK OF FILL AT INTERSECTION OF CHAMFER WITH THE HEXAGON CORNERS SHALL BE PERMISSIBLE.
2. WASHER RETENTION DETAIL SHALL BE OPTIONAL. HOWEVER, NO PORTION OF RETAINING COLLAR SHALL PROTRUDE BEYOND THE WASHER SECTION NOR BE SMALLER THAN THREAD ROOT DIA.
3. WASHER TO BE FIRMLY RETAINED ON NUT. YET BE FREE TO ROTATE AT A TORQUE NOT EXCEEDING 4.0 Nm.
STOCK THICKNESS TO 2.28 - 2.60
CROWN HEIGHT TO 0.00 - 0.28
WASHER WALL MAY BE CONVEX (UPWARD) TO 0.25 MAX FROM FLAT.
4. RECOMMENDED MAXIMUM CLEARANCE HOLE DIA. IN PANEL 16.03
5. NUT MATERIAL—GM510M(9) STEEL, ACTUAL NUT WIDTH ACROSS FLATS SHALL NOT INCREASE BY MORE THAN 3% WHEN MEASURED ON THE TEST MANDREL BOTH BEFORE AND AFTER PROOF LOAD TEST WITH 15.75 - 16.03 CLEARANCE HOLE IN TEST FIXTURE.



C/N	S	CHANGE	DATE	DR	CH	OK
	A					
	B					
	C					
	D					
	E					

DECKER FASTENERS, LTD.

CONFIDENTIAL

THIS DOCUMENT IS THE EXCLUSIVE PROPERTY OF DECKER MANUFACTURING CORPORATION AND IS TO BE RETURNED TO THE COMPANY UPON REQUEST. THE CONTENTS ARE NOT TO BE USED IN ANY MANNER DETRIMENTAL TO THE INTERESTS OF THE COMPANY. THEY ARE NOT TO BE DISCLOSED OR REPRODUCED IN WHOLE OR IN PART WITHOUT EXPRESSED CONSENT.

PART NAME NUT/WASHER ASSEMBLY		
CUSTOMER PART NO.		
MATERIAL NUT - SEE NOTE 5 WASHER SAE 1050-1065 ROCKWELL C40-48		
FINISH PLAIN	SCALE	
DRAWN BY MAK	DATE 8/28/02	PART NO.
CHECKED BY	APPROVED BY	535-7396