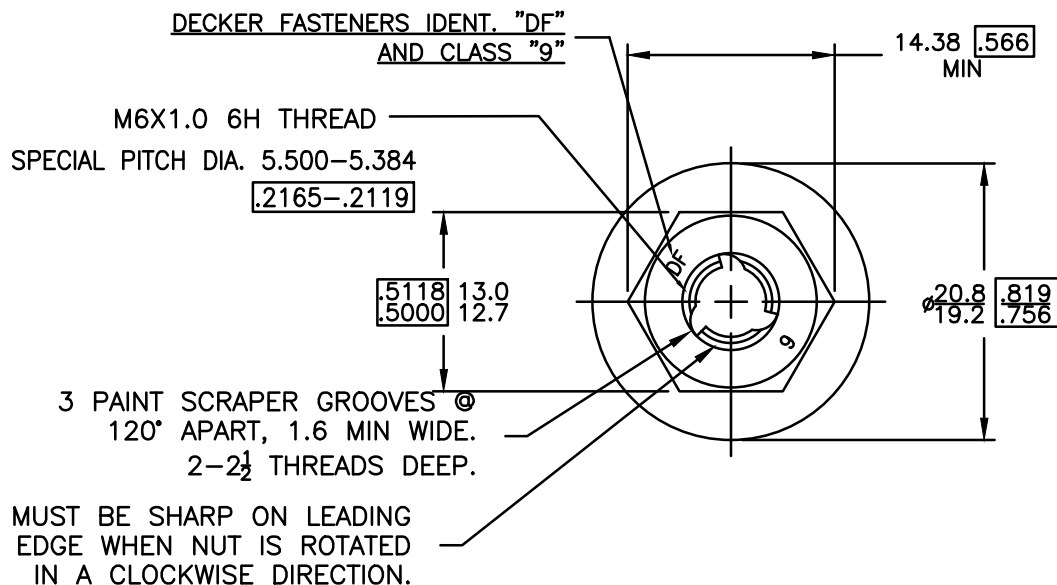
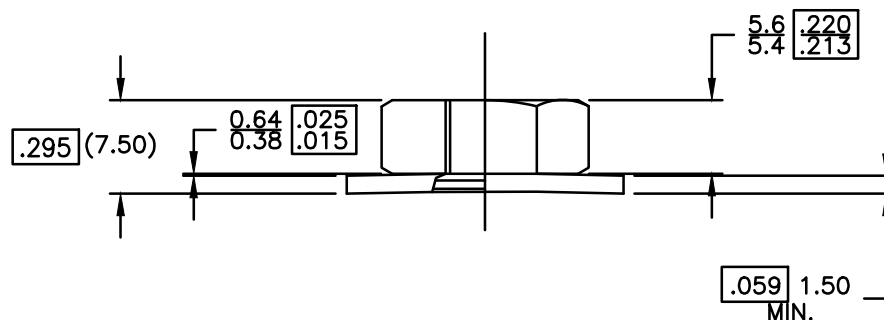


NOTE: DIMENSIONS IN ARE IN INCHES.



NOTES:

1. NUT MATERIAL PER CHRYSLER MS-6179-9
2. WASHER MATERIAL PER CHRYSLER MS-389 OR MS-482. HEAT TREAT PER CHRYSLER PS-1-OF 50 HRC 44-49.
3. WASHER TO BE FIRMLY RETAINED ON NUT YET BE FREE TO ROTATE AT A TORQUE NOT EXCEEDING 0.56 Nm. AND MUST WITHSTAND LOAD TO FLATTEN FOR 24 HOURS WITHOUT CRACKING.



| C/N | S | CHANGE | DATE | DR | CH | OK |
|-----|---|---------------------|----------|-----|----|----|
| | A | ADDED WASHER I.D. | 11/8/10 | MAK | | |
| | B | ADDED SCRAPER DEPTH | 11/8/10 | MAK | | |
| | C | REMOVE WASHER I.D. | 11/17/10 | MAK | | |
| | D | | | | | |
| | E | | | | | |



CONFIDENTIAL

THIS DOCUMENT IS THE EXCLUSIVE PROPERTY OF DECKER MANUFACTURING CORPORATION AND IS TO BE RETURNED TO THE COMPANY UPON REQUEST. THE CONTENTS ARE NOT TO BE USED IN ANY MANNER DETRIMENTAL TO THE INTERESTS OF THE COMPANY. THEY ARE NOT TO BE DISCLOSED OR REPRODUCED IN WHOLE OR IN PART WITHOUT EXPRESSED CONSENT.

| | | |
|---------------------------------|-----------------|----------------------|
| PART NAME NUT & WASHER ASSY. | | |
| CUSTOMER PART NO. | | |
| MATERIAL SEE NOTES | | |
| FINISH PLAIN | SCALE 2X | |
| DRAWN BY MAK | DATE 5/18/10 | PART NO. 535-3102 |
| CHECKED BY | APPROVED BY | |