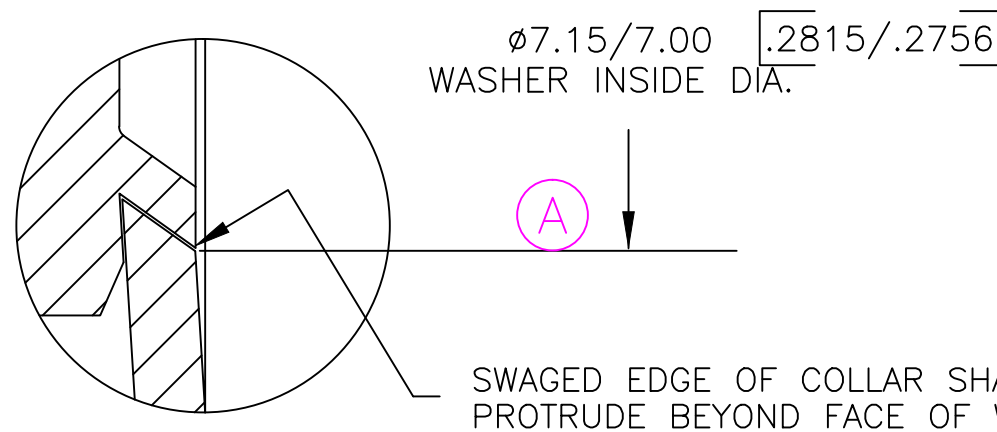


NOTE: DIMENSIONS IN [ ] ARE IN INCHES.

NOTES:

1. WASHER RETENTION DETAIL SHALL BE OPTIONAL. HOWEVER, NO PORTION OF RETAINING COLLAR SHALL PROTRUDE BEYOND THE WASHER SECTION NOR BE SMALLER THAN THREAD ROOT DIA.
2. WASHER TO BE FIRMLY RETAINED ON NUT. YET BE FREE TO ROTATE AT A TORQUE NOT EXCEEDING 0.56 Nm. AND MUST WITHSTAND LOAD TO FLATTEN FOR 24 HOURS WITHOUT CRACKING. NUT COLLAR TO RETAINER WASHER WITHOUT CONTACTING MATING SURFACE WHEN WASHER IS FLATTENED UNDER LOAD.  
WASHER CROWN HEIGHT 0.60/0.35 [.0236/.0140]



VIEW OF CIRCLE A

3. NUT MATERIAL PER CHRYSLER MS-6179-9  
WASHER MATERIAL PER CHRYSLER MS-389 OR MS-482  
ANNEALED HEAT TREAT PER CHRYSLER PS-1-0F00  
HRC 40-48.

C/N	S	CHANGE	DATE	DR	CH	OK
	A	RELOCATED DIMENSION LINE	10/1/10	MAK		
	B					
	C					
	D					
	E					



CONFIDENTIAL  
THIS DOCUMENT IS THE EXCLUSIVE PROPERTY OF DECKER MANUFACTURING CORPORATION AND IS TO BE RETURNED TO THE COMPANY UPON REQUEST. THE CONTENTS ARE NOT TO BE USED IN ANY MANNER DETRIMENTAL TO THE INTERESTS OF THE COMPANY. THEY ARE NOT TO BE DISCLOSED OR REPRODUCED IN WHOLE OR IN PART WITHOUT EXPRESSED CONSENT.

PART NAME <b>NUT/WASHER ASSEMBLY</b>		
CUSTOMER PART NO.		
MATERIAL <b>SEE NOTE 3</b>		
FINISH <b>PLAIN</b>		SCALE ~
DRAWN BY <b>MAK</b>	DATE <b>5/17/10</b>	PART NO.
CHECKED BY	APPROVED BY	<b>535-1811</b>